

## Documentation 20 cm Spirale & 12 spirals discs

### Context

The work of D'Arsonval and Rife has shown that stress generated by magnetic fields causes the body or pathogens to react.

D'Arsonval used very high frequencies to heat the body's cells. This phenomenon is called diathermy or thermo-penetration. With the right frequencies, tissues don't heat up.

The body's responses can be

- Pathogen destruction,
- Energy ,
- Normalization of the endocrine system, including the thyroid.

References :

- <https://www.endocrino-psychologie.org/endocrinologie-sportive>
- <https://www.adarsonval.fr/heritage3.html>
- [https://www.persee.fr/doc/bupsy\\_0007-4403\\_1966\\_num\\_19\\_248\\_7671](https://www.persee.fr/doc/bupsy_0007-4403_1966_num_19_248_7671)

### Hardware

To produce the signal (frequency, , electrical power, etc.), we need a frequency generator and coils to transmit these electrical signals in magnetic form.

Spooky2's GX generator (<https://www.spooky2.fr/product/spooky2-generatorx/>) can be used to produce signals (frequency, power, waveform, sequencing, etc.) tailored to the required specifications (the XM generator has physical limitations that prevent it from doing as well).

To create an enveloping magnetic field, you need 2 discs (coils) like the one shown here: <https://www.etsy.com/fr/listing/1087546085/disque-spirale-20cm-12-spirales-coil> or <https://eolix.fr/produit/disque-20-cm-spirale-12-spirales-avec-cable-pour-spooky2/>



## Software

The installation software and user's guide are free of charge and can be downloaded from <https://www.spooky2.fr/downloadspage/>.

The Spooky2 solution (hardware+ software) is a complete, rich Rife machine. Using the software requires a little time to get the hang of it.

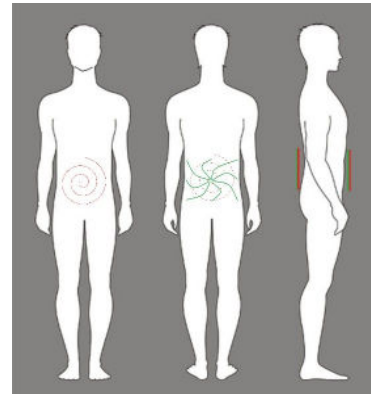
## Use

Depending on the objectives targeted (energy, pathology, thyroid, etc.), the way you use the software will not be the same. Contact Spooky2's French referents (e-mail [spooky2france@gmail.com](mailto:spooky2france@gmail.com) , exchange group <https://www.facebook.com/groups/Spooky2Francais>) for more details.

Each coil consists an Archimedean spiral, rotating anti-clockwise (levorotary). On the back of the disc are 12 golden number spirals.

The 2 discs are to be oriented in the same direction, as they were stacked (by analogy with magnets, opposite faces "touch").

To target the digestive organs, one of the discs is placed on the stomach, centered on the navel, while the other is placed in the small of the back, so that the whole is on side of the body's soft tissues.



The orientation of the discs is not important. It doesn't matter whether the spiral faces inwards or outwards, as long as the 2 discs are oriented in the same direction. Thus positioned, the magnetic field created will be very enveloping.

To target another area of the body, place it in a sandwich, respecting the orientation of the discs.

Clothes can be kept on, but care must be taken to remove metal (piercings, belts) or keep them away (fly).

Connect the cables to the OUT1 and OUT2 outputs of one of the GX box's G1 or G2 generators, and set up the care according to your needs.